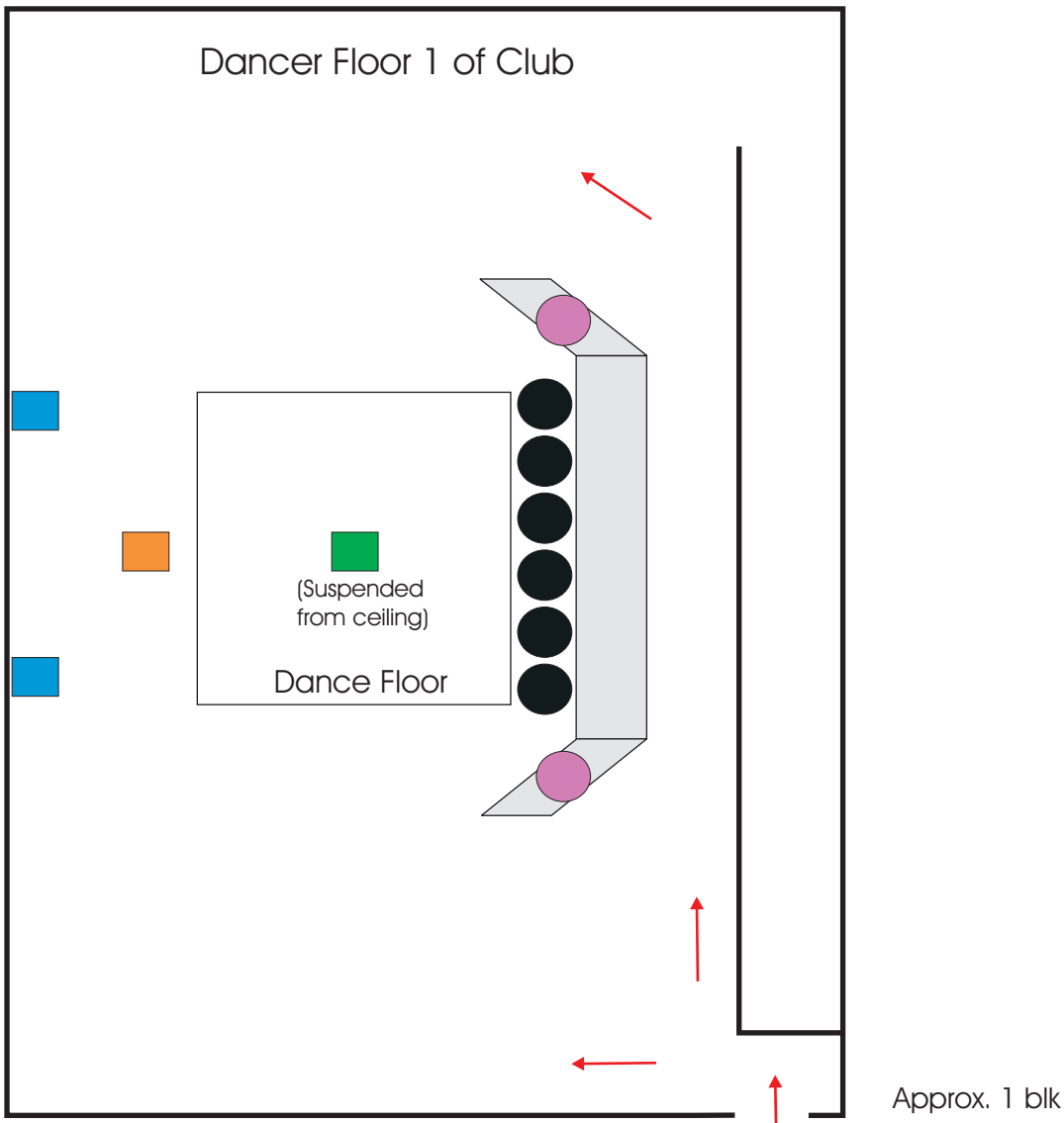
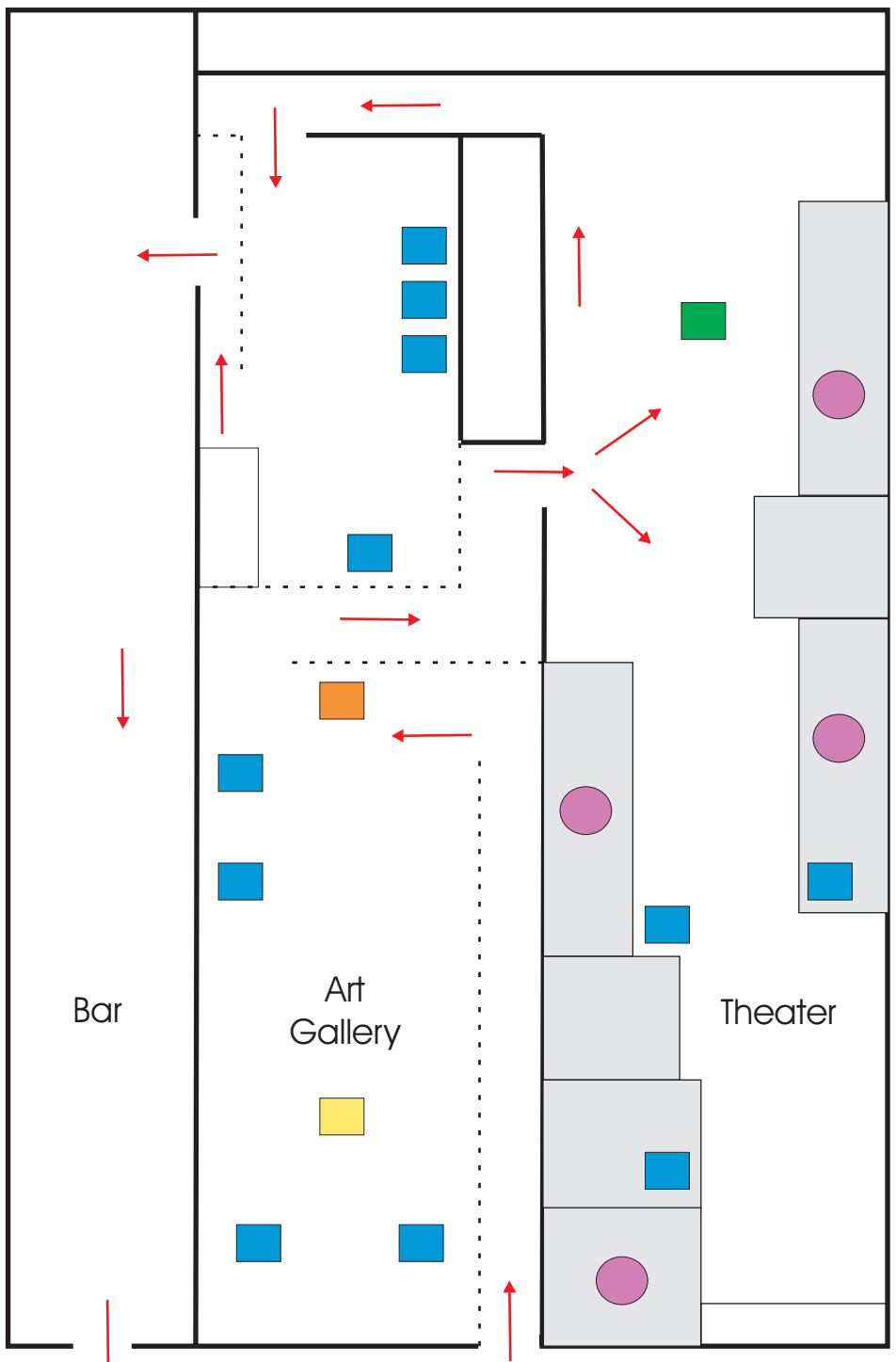


Installation #6 Layout: *A Crisis of Perception: Toward the Long Now*, May 2002

- - - - = Curtains
 - = Stage Platforms
 - = Video Monitors
 - = Video Projectors
 - = 16mm Film Projectors
 - = Overhead Projector
 - = Actors
 - = Dancers
- Legend not including art displays



One X Night Club (Part 2)



Zeitgeist Theater (Part 1)